

# City of Wolverhampton Council

## Senior Management Team



**Managing Director**  
Keith Ireland - Acting Returning Officer  
01902 55 4500



**West Midlands Pension Fund**  
Strategic Director  
Geik Drever  
01902 55 2020



**West Midlands Transport**  
Strategic Director  
Laura Shoaf  
01902 55 4097



**People**  
Strategic Director  
Linda Sanders  
01902 55 5300



**Corporate**  
Director of Finance  
Mark Taylor -  
Section 151 Officer  
01902 55 6609



**Corporate**  
Director of  
Governance  
Kevin O'Keefe  
01902 55 4910



**Education**  
Director of Education  
Julien Kramer  
01902 55 4100



**Place**  
Strategic Director  
Tim Johnson  
01902 55 5400



**Children and Young People**  
Service Director  
Emma Bennett  
01902 55 1449



**Older People**  
Service Director  
Tony Ivko  
01902 55 5310



**Disability and Mental Health**  
Service Director  
Viv Griffin  
01902 55 5370



**Well-Being**  
Service Director  
Ros Jervis  
01902 55 0347



**City Assets**  
Service Director  
Nick Edwards  
01902 55 4310



**City Economy**  
Service Director  
Keren Jones  
01902 55 4739



**City Environment**  
Service Director  
Nick Alderman  
01902 55 2368

# City of Wolverhampton Council

## Senior Management Team

Keith Ireland - Acting Returning Officer  
**Managing Director**

01902 55 4500  
keith.ireland@wolverhampton.gov.uk

- Governance
- Transformation
- Strategic Finance
- Education
- People
- Place
- West Midlands Transport
- West Midlands Pension Fund
- Communications
- Customer Services
- ICT Services

Geik Drever  
**Strategic Director: Pensions**

01902 55 2020  
geik.drever@wolverhampton.gov.uk

- Investments
- Actuarial and Pension
- Pension Governance
- Pension Administration
- Finance

Laura Shoaf  
**Strategic Director:  
West Midlands Transport**

01902 55 4097  
laura.shoaf@wolverhampton.gov.uk

Linda Sanders  
**Strategic Director: People**

01902 55 5300  
linda.sanders@wolverhampton.gov.uk

- Children and Young People
- Older People
- Disability and Mental Health
- Public Health and Well-Being

Tim Johnson  
**Strategic Director: Place**

01902 55 5400  
tim.johnson@wolverhampton.gov.uk

- City Assets
- City Economy
- City Environment

Mark Taylor -  
Section 151 Officer  
**Director of Finance**

01902 55 6609  
mark.taylor@wolverhampton.gov.uk

- Strategic Finance
- The Hub
- Audit Services
- Revenue and Benefits
- Procurement

Kevin O'Keefe  
**Director of Governance**

01902 55 4910  
kevin.o'keefe@wolverhampton.gov.uk

- Human Resources
- Democratic Services
- Legal Services
- Corporate Administration

Julien Kramer  
**Director of Education**

01902 55 4100  
julien.kramer@wolverhampton.gov.uk

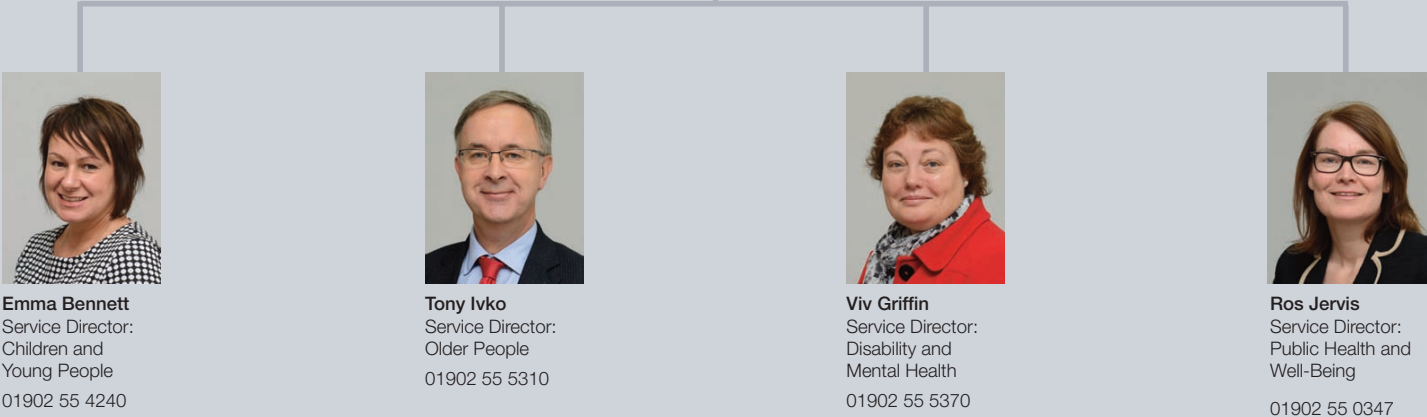
- School Standards
- School Planning and Resources

# City of Wolverhampton Council

## People



**Linda Sanders**  
Strategic Director  
01902 55 5300



**Emma Bennett**  
Service Director:  
Children and  
Young People  
01902 55 4240



**Tony Ivko**  
Service Director:  
Older People  
01902 55 5310



**Viv Griffin**  
Service Director:  
Disability and  
Mental Health  
01902 55 5370



**Ros Jervis**  
Service Director:  
Public Health and  
Well-Being  
01902 55 0347

Linda Sanders  
**Strategic Director: People**  
01902 55 5300  
linda.sanders@wolverhampton.gov.uk

- Children and Young People
- Older People
- Disability and Mental Health
- Public Health and Well-Being

Emma Bennett  
**Service Director:  
Children and Young People**  
01902 55 1449  
emma.bennett@wolverhampton.gov.uk

- Children in Need and Child Protection
- Looked after Children
- Youth Offending
- Children's Commissioning
- Early Help Services
- Educational Psychology

Tony Ivko  
**Service Director:  
Older People**  
01902 55 5310  
anthony.ivko@wolverhampton.gov.uk

- Commissioning - Older People
- Welfare Rights
- Assessment and Care Management
- Carers Support
- Independent Living Services
- Libraries and Community Recreation

Viv Griffin  
**Service Director:  
Disability and Mental Health**  
01902 55 5370  
vivienne.griffin@wolverhampton.gov.uk

- All Age Disability Assessment and Care Management
- Mental Health Assessment and Care Management
- Emergency Duty Team
- Special Educational Needs
- Commissioning - All Age Disability and Mental Health
- Provision - All Age Disability and Mental Health
- Headstart Programme

Ros Jervis  
**Service Director:  
Public Health and Well-Being**  
01902 55 0347  
ros.jervis@wolverhampton.gov.uk

- Public Health
- Transformation and Health Protection
- Healthier Places
- Safeguarding (Adults and Children)
- Community Safety
- Resilience

# City of Wolverhampton Council

## People: Children and Young People



**Emma Bennett**  
Service Director  
01902 55 1449



**Andrew  
Wolverson**  
Head of Early Help  
0-5 Year-olds  
01902 55 1272



**Rachel King**  
Head of Early Help  
5-18 Year-olds  
01902 55 5955



**Julian  
Cunningham**  
Head of Child  
Protection  
01902 55 3039



**Alison Hinds**  
Head of Looked  
After Children  
01902 55 3035



**Elaine  
O'Callaghan**  
Project Manager:  
Families R First  
01902 55 5736



**Rob Hart**  
Principal  
Educational  
Psychologist  
01902 55 0539



**Sally Nash**  
Head of Youth  
Offending  
01902 55 3722



**Carole Bourne**  
Head of Service  
Children's  
Commissioning  
01902 55 6585

Emma Bennett  
**Service Director:  
 Children and Young People**  
 01902 55 1449  
 emma.bennett@wolverhampton.gov.uk

- Children in Need
- Child Protection
- Looked after Children
- Youth Offending
- Children's Commissioning
- Early Help
- Educational Psychology
- Targeted Family Support

Andrew Wolverson  
**Head of Early Help  
 0-5 Year-olds**  
 01902 55 1272  
 andrew.wolverson@  
 wolverhampton.gov.uk

- Children's Centres
- Early Years Provision support and advice
- Information for Families service
- Nursery education for 2,3 and 4 year olds
- Childcare sufficiency duty
- Early Help assessment system

Rachel King  
**Head of Early Help  
 5-18 Year-olds**  
 01902 55 5955  
 rachel.king@  
 wolverhampton.gov.uk

To lead the Council's operational activity for 5-18 year old children at risk of social and educational exclusion ensuring effective preventative and early help targeted support. Specific areas of responsibility include:

- School attendance
- Behaviour Support in schools and work around exclusions/ alternative provision
- Support for pupils with SEN/D
- Targeted Youth Support
- Troubled Families Programme
- Elective Home Education
- Support for the GRT community
- Targeted Family Support

Julian Cunningham  
**Head of  
 Child Protection**  
 01902 55 3039  
 julian.cunningham@  
 wolverhampton.gov.uk

- Management of children in need
- Child protection and Looked After Children casework
- Supervised contact for LAC
- Intensive Family Support
- Family Group Conferencing

Alison Hinds  
**Head of Looked  
 after Children**  
 01902 55 3035  
 alison.hinds@  
 wolverhampton.gov.uk

- Looked After Children and Care Leavers casework
- Adoption
- Fostering
- Virtual School
- Corporate Parenting

Elaine O'Callaghan  
**Project Manger:  
 Families R First**  
 01902 55 5736  
 elaine.o'callaghan@  
 wolverhampton.gov.uk

- Manage a programme of change
- Reduce the number of looked after children
- Support partnership working
- Support service direction

Dr Robert Hart  
**Principle  
 Educational  
 Psychologist**  
 01902 55 0539  
 robert.hart@  
 wolverhampton.gov.uk

- Psychological advice for statutory SEN assessments
- Psychological support to integrated Child and Family Support Teams
- Specialist psychological support to COPE team
- Specialist psychological support to YOT team
- Educational psychology and specialist teaching SEN support for schools
- Neurodevelopmental assessments (autism, ADHD)
- Advice on specialist educational provision
- Service specialisms include: early years, mental health/ emotional wellbeing, learning difficulties/ disabilities, behaviour, developmental disorders
- Children and young people (aged 0-25)

Sally Nash  
**Head of Youth  
 Offending**  
 01902 55 3722  
 sally.nash@  
 wolverhampton.gov.uk

- Manage multi agency YOT
- Liaise with strategic partners in respect of offender management and prevention of offending
- Facilitate YOT Management Board

Carole Bourne  
**Head of Service  
 Children's  
 Commissioning**  
 01902 55 6585  
 carole.bourne@  
 wolverhampton.gov.uk

- Strategic development, commissioning and contract monitoring.
- Children, Young People and Families Plan
- Social Care
- Early Help
- Housing Support & Social Inclusion for Young People, Young Families and Violence & Abuse
- The service also has within its remit a placement team who broker and manage placements for looked after children, and some disabled children



**Tony Ivko**  
Service Director  
01902 55 5310



**Paul Smith**  
Head of  
Commissioning:  
Older People  
01902 55 5318



**Helen Winfield**  
Financial Support  
Services Manager  
01902 55 3353



**David Raybould**  
Promoting  
Independence  
Programme Manager  
01902 55 2222



**Robert Johnson**  
Libraries and  
Community  
Recreation  
01902 55 2186



**Angela Coxhead**  
Head of Assessment  
and Care  
Management  
01902 55 3629



**Sue Bell**  
Head of  
Independent Living  
01902 55 4789

Tony Ivko  
**Service Director: Older People**

01902 55 5310  
anthony.ivko@wolverhampton.gov.uk

- Commissioning - Older People
- Welfare Rights
- Assessment and Care Management
- Carers Support
- Independent Living Services
- Libraries and Community Recreation

Paul Smith  
**Head of Commissioning (Older People)**

01902 55 5318  
paul.smith@wolverhampton.gov.uk

- Delivery of Joint Commissioning Strategies and Implementation Plans
- Delivery of Market Development and Support
- Contract Ownership and Compliance
- Delivery of Corporate Programme Requirements
- Delivery of Better Care Fund Work Streams

Helen Winfield  
**Financial Support Services Manager**

01902 55 3353  
helen.winfield@wolverhampton.gov.uk

- Financial Assessments (and billing) for residential and non-residential care and support
- Welfare Rights – maximisation of benefits to enable financial inclusion and payments towards care and support
- Care and Support Direct Payments administration, monitoring and review
- Destitute Plus provision
- NHS Continuing Healthcare Lead and providing professional guidance to the local authority Continuing Healthcare Assessors
- Ordinary Residence funding responsibilities

David Raybould  
**Promoting Independence Programme Manager**

01902 55 2222  
david.raybould@wolverhampton.gov.uk

- Care Act compliance for Assessment and support Planning
- Care Act Compliance Carers
- Adult Social Care Operating Model design and implementation
- Promoting Independence

Robert Johnson  
**Head of Libraries and Community Recreation**

01902 55 2186  
robert.johnson@wolverhampton.gov.uk

- Libraries
- Community Centre
- Community Hubs
- Wolverhampton Information Network (Win)
- Neighbourhood Support Services (NSS)
- Blakenhall Community and Healthy Living Centre
- Education Library Service
- Home Library Service

Angela Coxhead  
**Head of Assessment and Care Management**

01902 55 3629  
angela.coxhead@wolverhampton.gov.uk

- Older Peoples Assessment and Care Management locality teams
- Hospital Discharge Service
- Community Occupational Therapy Service
- Rehab Centres
- Residential Homes
- EMI Day Care (as part of the Black Country Partnership),
- CICT
- HARP
- BCF Joint Lead on two work streams: Intermediate Care and Primary and Community Care
- Care Act Working Group

Sue Bell  
**Head of Independent Living**

01902 55 4789  
sue.bell@wolverhampton.gov.uk

- All age provision of Independent Living Services
- All age provision of adaptations
- Equipment delivery provision



# City of Wolverhampton Council

## People: Disability and Mental Health



**Viv Griffin**  
Service Director  
01902 55 5370



**Kathy Roper**  
Disability Manager  
01902 55 0975



**Suzanne Smith**  
Head of All Age  
Disability (Disabilities)  
01902 55 5377



**June Pickersgill**  
Head of Mental  
Health  
01902 55 1393



**Tom Denham**  
Head of All Age  
Disability (Provision)  
01902 55 3323



**Kevin Pace**  
HeadStart  
Programme  
Manager  
01902 55 6817

Viv Griffin  
**Service Director:  
Disability and Mental Health**

01902 55 5370  
vivienne.griffin@wolverhampton.gov.uk

- All Age Disability Assessment and Care Management
- Mental Health Assessment and Care Management
- Emergency Duty Team
- Special Educational Needs Commissioning - All Age Disability and Mental Health
- Provision - All Age Disability and Mental Health
- Headstart Programme

Kathy Roper  
**Disability Manager**

01902 550975  
kathy.roper@wolverhampton.gov.uk

- Delivery of Joint Commissioning Strategies and Implementation Plans
- Delivery of Market Development and Support
- Contract Ownership and Compliance
- Delivery of Corporate Programme Requirements
- Delivery of Better Care Fund Work Streams

Suzanne Smith  
**Head of All Age Disability  
(Disabilities)**

01902 844590  
suzanne.smith@wolverhampton.gov.uk

- All age Disability and Assessment and Care Management
- Special Educational Needs
- Children with Disability

June Pickersgill  
**Head of Mental Health**

01902 55 1393  
june.pickersgill@wolverhampton.gov.uk

- Delivery of Mental Health Statutory provision 24/7
- Inclusive of Older Adults , young people in transition and Adults of working age
- Met the legal requirement for Mental Health Act
- Safeguarding the service users
- Risk management for staff and service users
- Budget management - and budget savings
- Service quality control
- Demand management
- Staff well-being and staff development
- Service redesign to meet organisational requirements

Tom Denham  
**Head of All Age Disability  
(Provision)**

01902 55 3323  
tom.denham@wolverhampton.gov.uk

- Community Outreach service for adults with a learning disability
- Residential service for adults with a learning disability
- Short breaks services for adults and children with a learning disability
- Day Opportunities services for adults with a disability
- Enablement service for adults and young people with a disability
- Pathways to Employment for adults and young people with a disability

Kevin Pace  
**Headstart Programme  
Manager**

01902 55 6817  
kevin.pace@wolverhampton.gov.uk

- National programme for young people aged 10-14 and Wolverhampton is one of 12 HeadStart areas across the UK,
- Funded by the Big Lottery to run a series of innovative pilot projects to test new approaches to prevention and early intervention.

# City of Wolverhampton Council

## People: Public Health and Well-Being



**Ros Jervis**  
Service Director  
01902 55 0347



**Glenda Augustine**  
Consultant in Public Health  
- Intelligence and Evidence  
01902 55 8662



**Katie Spence**  
Consultant in Public Health -  
Health, Protection and  
NHS Coordination  
01902 55 8674



**Dawn Williams**  
Head of  
Safeguarding and  
Quality  
01902 55 0655



**Juliet Grainger**  
Head of Public Health -  
Commissioning  
01902 55 1028



**Richard Welch**  
Head of  
Healthier Place  
01902 55 2162



**Neeraj Malhotra**  
Consultant in Public  
Health:  
Transformation  
01902 55 8667

Ros Jervis  
**Service Director:  
Public Health and Wellbeing**

01902 55 0347  
ros.jervis@wolverhampton.gov.uk

- Public Health
- Transformation and Health Protection
- Healthier Places
- Safeguarding (Adults and Children)
- Community Safety
- Resilience

Glenda Augustine  
**Consultant in Public Health - Intelligence and Evidence**

01902 55 8662  
glenda.augustine@wolverhampton.gov.uk

- Management of the Public Health intelligence and evidence team
- Public Health intelligence and evidence briefings
- Specific Health Needs Assessments
- Joint Strategic Needs Assessment
- Individual Funding Request support for Wolverhampton Clinical Commissioning Group
- Service Evaluation
- Policy Review
- Public Health Education Lead
- Research and development
- Advice on health care service indicators and outcomes to support commissioning

Katie Spence  
**Consultant in Public Health - Health, Protection and NHS Cordination**

01902 55 8674  
katie.spence@wolverhampton.gov.uk

- Health Protection scrutiny, challenge and assurance
- Communicable Disease prevention and control
- Emergency Planning, Resilience and Response
- Public Health Core Offer to CCG
- Healthcare Public Health
- Public health services monitoring and development

Dawn Williams  
**Head of Safeguarding and Quality**

01902 55 0655  
dawn.williams@wolverhampton.gov.uk

- Safeguarding advice
- People who pose a Risk to Children
- Management of allegations in respect of People in Positions of Trust
- Looked after Children reviews
- Child Protection Conferences
- Foster home Reviews
- Missing Children
- Child sexual Exploitation
- Trafficked Children
- Child Employment
- Deprivation of Liberty Safeguards
- Funerals and Property
- Court of Protection
- Quality Assurance
- Practice Improvement
- Children and Adults Safeguarding Boards

Juliet Grainger  
**Head of Public Health - Commissioning**

01902 55 1028  
juliet.grainger@wolverhampton.gov.uk

- Strategic planning; assessing needs, reviewing provision and priority setting
- Procurement; service design, supply shaping, planning capacity and demand
- Monitoring and evaluation; performance management and patient experience
- Budget Management
- Staff management

Richard Welch  
**Head of Healthier Place**

01902 55 2162  
richard.welch@wolverhampton.gov.uk

- Sports Development and Physical Activity Team
- Healthy Schools Team
- Lead for Obesity within the City
- Lead on Planning For Urban Health
- Aspects of the Wider Determinants of Health
- Workplace Health

Neeraj Malhotra  
**Consultant in Public Health: Transformation**

01902 55 8667  
neeraj.malhotra@wolverhampton.gov.uk

- Healthy Child Programme
- Transformational Fund
- Community Call to Action
- Community Safety
- Mental Health
- Substance misuse
- Violence prevention